

THE CONSORTIUM
ACADEMY TRUST

Parent Guide

Transition 2023/24



Contents

04	Welcome to Penshurst	19	Extracurricular and Enrichment
06	Our Vision and Values	20	Early Years Foundation Stage
08	Key People	21	A Typical Day in Nursery
09	Head of School Welcome	22	Tapestry
10	School day	23	The Corridor Code
11	Communication	24	School Payments
12	Curriculum	25	Catering
13	Homework	26	Well-being and Support
14	Our Houses	28	Parental Feedback
15	Celebrations	29	Frequently Asked Questions
16	Our Uniform	30	Term Dates 2023-24



Shaping Positive Futures



Welcome to our new pupils.

Penshurst Primary School (an all-through school which includes Hessele High School & Sixth Form College) is part of The Consortium Academy Trust.

At The Consortium Academy Trust, we are ambitious about the future - creating learning environments and excellence in teaching and learning that provide our children and young people with the best chance at a successful future.

Our vision is Shaping Positive Futures as we strongly believe our sole purpose is supporting children and young people to achieve their ambitions. This vision gives us a shared sense of purpose and direction and is something we are all proud to be a part of.

Across our community of nine schools our people are doing remarkable things by being fully engaged in work that transforms lives, supporting children and young people to grow in confidence and develop into citizens we are proud of.

We are ambitious to shape positive futures so each young person can excel and achieve their goals in education and beyond and we welcome you as you begin to explore and develop your interests and passions at the start of your education journey with us.

Lizann Lawson, CEO



As a Trust we share resources and expertise, to ensure our young people experience inclusive learning opportunities alongside a challenging, fun and aspirant education."



Welcome to Penshurst

Welcome to Penshurst Primary School.

I am excited to welcome your child to our school community and cannot wait to meet them and be a part of their educational journey.

Penshurst Primary School is a wonderful environment for children to begin their school life. It is a warm and friendly place where children are nurtured and supported to take their first steps on a journey of development and success. The dedicated staff and leaders are committed to ensuring that pupils enjoy their learning and have developed a curriculum that installs curiosity and wonder in the world we live in.

By choosing Penshurst Primary School, your child is also guaranteed a place at the highly successful Hessle High

School and Sixth Form College when your child reaches Secondary age, as both schools form part of The Hessle Academy. This seamless transition will ensure your child's learning and development is uninterrupted all the way up to age 16 and beyond.

We encourage our pupils to be curious, respectful, caring and to think for themselves by providing a warm, safe and encouraging atmosphere. Our curriculum is relevant and engaging, and pupils tell us they enjoy learning and feel part of the school.

We want children to enjoy their time at school, to play a full part in the life of the school and to achieve success in all they do. We love to share in the successes of our children. From the smallest to the largest of achievements – be that academic, sporting, social development or making a contribution – we celebrate and value every single success.

Vince Groak,
Headteacher The Hessle Academy



By choosing Penshurst Primary School, your child is also guaranteed a place at the highly successful Hesse High School and Sixth Form College when your child reaches Secondary age, as both schools form part of The Hesse Academy.”

Our Vision

All of our learners develop exceptional character.

In every phase, all of our learners achieve excellent outcomes.

All of our learners develop high levels of cultural and global awareness.

Our children, young people and adults will create positive and happy memories that last for a lifetime.

Our Values



Respect

We always show respect to ourselves and the people around us. We know that everyone is different and we respect that.



Resilience

We show determination and do not give up when we find things hard. We know that we might not understand our learning sometimes, but we work hard to figure it out.



Aspiration

We aim high and always try to achieve our best. We believe that we can make a difference to those around us.



Responsibility

We take responsibility for our own actions. We see our mistakes as something to learn from.



Integrity

We do the right thing. We are always honest with ourselves and other people. We are comfortable with who we are.



Kindness

We are always kind to those around us and we have good manners.



Key People



Mr Groak

*Headteacher
The Hesse Academy*



Mrs Preston

*Head of School
Penshurst Primary*



Mrs Hornby

*Assistant Headteacher -
Curriculum*



Mrs Paoli

*Assistant Headteacher -
Pastoral*



Mrs Johannson/Mrs Bates

EYFS Lead



Mrs Adams

Safeguarding Officer



Mrs Wall

Assistant SENDCo



Mrs Kibart

Attendance Manager

Welcome



Hello. My name is Mrs Preston, and I will be your child's Head of School.

Penshurst Primary School is built upon a love of reading and it is at the forefront of everything we do.

From Early Years Foundation Stage (EYFS) all the way through to Year 6, our subjects springboard from an exciting, engaging and age-appropriate lead text, which drives the theme for the half term. These themes are wide-ranging and cover many exciting topics, such as dinosaurs, pirates, ocean pollution, natural disasters, apartheid and war, to name but a few.

Pupils also have access to a wide range of quality books that they can take home to read with family; these are matched to their phonics or fluency ability and progress as the learners develop their skills. A phonics scheme called 'Read Write Inc' is taught throughout the school, through Phonics sessions in EYFS and Key Stage 1 (KS1), and Fresh Start intervention sessions where required in Key Stage 2 (KS2).

Reading, Writing and Maths are taught before lunch in KS1 and KS2, with foundation subjects being taught in the afternoon. Because we know that children retain more knowledge if they are engaged in an activity, foundation subjects are delivered with a hands-on approach to really captivate the learners.

In EYFS, formal learning and play-directed learning work in synergy. To make the transition to KS1 smoother for pupils, they are introduced to directed teaching at tables earlier in the year and this is having an incredibly positive impact. In EYFS communication between parents and the school is carried out via Tapestry, an online platform which allows us to share pictures and observations of your child's progress.

Michelle Preston,
Head of School



Penshurst Primary School is built upon a love of reading and it is at the forefront of everything we do."

School Day

Each day focuses on core lessons of Maths and English in the morning and all other subjects in the afternoon

School day for Reception

Gates Open	08:40 - 08:50
Registration	08:50 - 09:00
Morning Sessions	09:00 - 11:45
Lunch	11:45 - 12:45
Afternoon Sessions	12:45 - 15:10
End of School Day	15:10

School day for Years 1 – 6

Gates Open	08:40 - 08:50
Registration	08:50 - 09:00
Interventions, Circle and Target Time	09:00 - 09:15
Morning Sessions	09:15 - 12:00
Lunch	12:00 - 13:00
Afternoon Sessions	13:00 - 15:10
End of School Day	15:10

Communication

Effective communication between school and parents/carers for our pupils is extremely important.

Achieving this ensures that we can all support your child as they progress through primary school and develop into confident, thriving children.

Throughout the year we aim to keep you informed of your child's progress through progress evenings, progress reports

and information sessions at key times. We will also keep you up to date with events and developments within the Academy through our website, newsletters and many other forms of communication.

We recommend that you regularly check our school website and our school Twitter account to keep up to date with school life and activities.

www.thehessleacademy.co.uk/penshurst-primary
[@PenshurstSchool](https://twitter.com/PenshurstSchool)



Throughout the year we aim to keep you informed of your child's progress through progress evenings, progress reports and information sessions at key times."



Curriculum

Our broad and balanced curriculum creates a range of memorable experiences and opportunities for the children in our care.

We develop children's character through our school values, British values, key themes, global development and most importantly through a passion for reading. Rich and varied texts drive our curriculum inspiring a thirst for knowledge, a love of language and an opportunity to visit the unknown. We ensure our through school values weave through our curriculum and that the children are:

kind resilient respectful aspirational
responsible and have integrity

Our three main intentions are to:

- Develop a love of learning and strive for academic, physical and artistic success
- Develop the character of our learners through their behaviours and habits, ensuring they become effective learners and flourish as human beings
- Develop the moral and civic compass of our learners

The Curriculum...built upon a love of reading
Everyone can achieve the extraordinary....

Homework

As a parent or carer, you can play a vital role in your child's education, including homework.

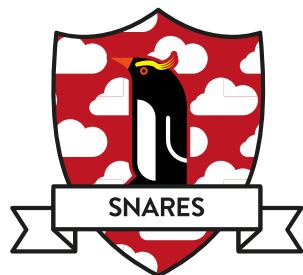
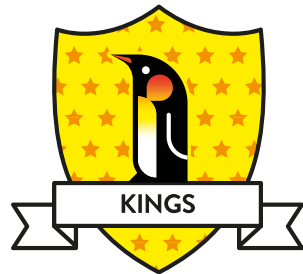
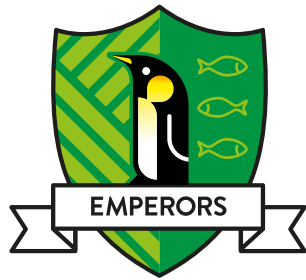
Our belief is that the most important thing your child can learn at school is to read. As a result, we ask all our families to join us in our "10-minute pledge". Research has shown that 20 minutes of reading every day can really help to increase a child's success at school and in later life.

Therefore, we promise to read to your child (above and beyond our other lessons) for 10 minutes every day and simply ask you to match that at home. This can be reading to your child or listening to them read to you.

Microsoft Teams has been introduced for all pupils from Years 1- 6 (Tapestry for Reception pupils) and it is here where homework tasks can be accessed. This is also where teachers will communicate any year group messages. Links will be available should your child wish to complete them.



Our belief is that the most important thing your child can learn at school is to read. As a result, we ask all our families to join us in our "10-minute pledge."



Our Houses

Throughout The Hessle Academy every learner and member of staff is part of a House community.

Each House has a specific identity and forms a community within the wider school. We strongly believe that this provides our children with an increased sense of belonging.

At Penshurst we have four House teams named after penguins - Emperors, Kings, Rockhoppers and Snares. All children take place in a 'sorting hat' event when they join which allocates their place in a given House.



Celebrations

Every week, one child is chosen from each class to win the coveted award of Pupil of the Week.

This award is given for various reasons, such as being polite, listening well in class, working to the best of their ability, good attendance and following the rules in school.

The children are presented with their awards at school assemblies and the teachers write down exactly why the child deserves the award.

We also have a school mascot called 'Pablo the Penguin' who runs his own shop; pupils spend their Penguin Pounds at Pablo's shop weekly.

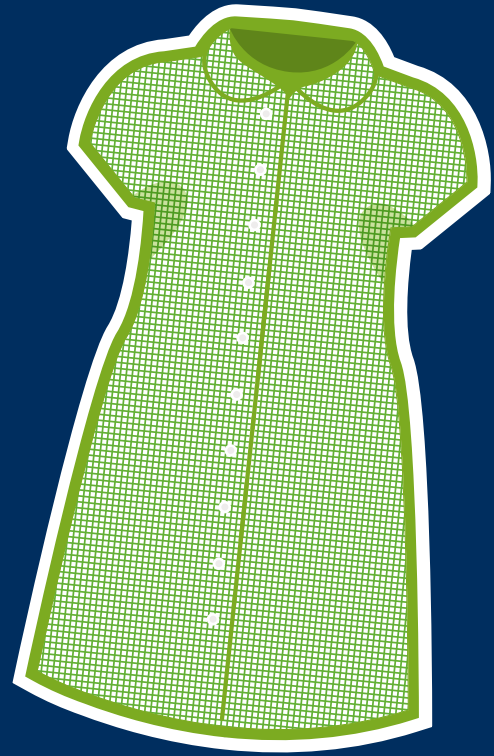
PABLO



☆ the Penguin ☆

Penguin Pounds are received during the week for good behaviour, super work, excellent attitudes, use of manners and school values.

Our Uniform



EYFS

Girls:

- Gold polo shirt
- Green sweatshirt or cardigan with school logo
- Grey or black skirt, trousers, shorts or pinafore dress.
In summer, a green checked dress may be worn.
- Plain black, grey or white socks, or plain black tights
- Sensible black shoes. No high-heels or flip-flops

Boys:

- Gold polo shirt
- Green sweatshirt with school logo
- Grey or black trousers or shorts
- Plain black, grey or white socks
- Sensible black shoes

Primary

Girls:

- White polo style shirt
- Green sweatshirt with school logo
- Green or grey skirt or pinafore dress, grey or black trousers or shorts. In summer, a green checked dress may be worn.
- Plain black, grey or white socks, or plain black tights
- Sensible black shoes, no high-heels or flip-flops

Boys:

- White polo style shirt
- Green sweatshirt with school logo
- Grey or black trousers or shorts
- Plain black, grey or white socks
- Sensible black shoes

Year 6: Green tie with yellow stripes (available at Rawcliffes). Ties need to be worn with a white shirt.

Our Uniform



Indoor PE Kit

- T-shirt in house colours
- Plain black shorts
- White, ankle sport socks
- Leotard for dance or gym (optional)

Outdoor PE Kit

- T-shirt in house colours
- Plain black shorts
- White, ankle sport socks
- Tracksuit for cold weather, dark-coloured preferable (optional)

Footwear

Students will need to bring indoor sport trainers with non-marking soles. It is advisable for students to bring moulded football boots (depending on the activity). Footballers should also wear shin guards.

Jewellery

A single small, plain metal stud may be worn in pierced ears. No other jewellery or studs or body piercings should be worn. All earrings will need to be removed for PE lessons.

We have a simple school uniform that can be bought at most clothing shops. The compulsory items are available through our uniform provider, Rawcliffes Schoolwear. Logo school wear and other uniform items can be purchased through their website <https://rawcliffes.co.uk> or from their shop:

Rawcliffes Schoolwear

16 Saville Street, Hull, HU1 3EF

Tel: 01482 223539

Email: info@rawcliffes.co.uk



Extracurricular and Enrichment

We offer an array of extracurricular activities to further enhance your child's school life.

These are just a few of the clubs we may have on offer:

- **Sports** - including Football, Basketball, Dodge Ball, Badminton, Tennis and ball games.
- **Games and Puzzles** - Fun for all ages
- **Top Trumps** - Will your child be the champion?
- **Reading Club** - Relax with a good book

Our vision is to nurture young people who have exceptional character and high levels of cultural and global awareness.

We are committed to an extensive extracurricular programme which involves lots of fun and exciting trips and visits.

During these visits, children learn about taking responsibility for themselves, working closely with others as well as gaining knowledge about the locations themselves.

These include:

- Bridlington Spa
- Eden Camp
- Hornsea Beach
- Jorvik Centre
- Kingswood Water Park
- The Deep
- York Chocolate Story

We love to have parents/carers visit and join in with the learning and the fun! Some of the events we put on each year are:

- Challenge and Faith Days
- House Initiation Assembly
- Leavers' Assembly
- Musical Theatre Productions
- Sports Days
- Summer Picnic



Our vision is to nurture young people who have exceptional character and high levels of cultural and global awareness."



Early Years Foundation Stage

The start of your child's learning journey

Our Early Years Foundation Stage (EYFS) is where learning with The Hessle Academy begins.

Our youngest children are at the heart of our community and every child that walks through our doors receives a very warm welcome.

These early years form the foundations of your child's ongoing education and that is why we passionately believe in making a child's first years in school as stimulating, memorable and inspiring as possible.

We recognise that every child has their own personality and individual needs and see it as our responsibility to provide

them with a warm, safe and nurturing environment in which to grow and thrive.

Our bespoke learning environment houses the Nursery (Foundation Stage 1) and Reception classes (Foundation Stage 2) and the area is exceptionally well-equipped for both indoor and outdoor 'learning through play' activities.

Our dedicated, enthusiastic staff work hard to ensure every child feels secure and happy, and we pride ourselves on our positive and nurturing relationships which enable all children to be strong, confident and independent.

Our Early Years Foundation Stage is a very special place, and the most wonderful opportunities await.

A Typical Day in Nursery

Morning sessions:

08:45 – 11:45

Starting the day:

- Welcome and adult-led activity

In the morning:

- Morning circle
- Learning through play
- Snack time
- Read Write Inc (Phonics)
- Story time



Lunch:

11:45 – 12:15

Lunch time:

- Support with packed lunch from lunch and EYFS staff
- Outdoor play



Afternoon sessions:

12:15 – 15:15

In the afternoon:

- Small-group Maths and Literacy work
- Learning through play
- Story time





Tapestry

We share and celebrate the children learning in the EYFS using an online programme called Tapestry.

Tapestry builds a very special record of your child's experiences, development and learning journey through their early years education. Using photos and videos, a teacher, along with the parents, 'weaves' the story of the child and how they are growing and developing. The Tapestry platform then works seamlessly to enable these memories to be kept as a permanent record of each child's unique journey.

Tapestry can be accessed via the web or an app on a mobile or tablet device. Parents can view online their child's progress and how much fun they are having, whilst also uploading their own comments and media.



Tapestry can be accessed via the web or an app on a mobile or tablet device."

Tapestry is where homework tasks can be accessed. In Foundation Stage 2 (FS2), children are assigned weekly homework which consolidates what is being taught in school.

In addition to Tapestry, children in Reception have access to the Read. Write. Inc Portal to develop their Early Readings skills. If you would like to share anything that you are doing at home with your child, please post it on Tapestry and we can share it with the class.

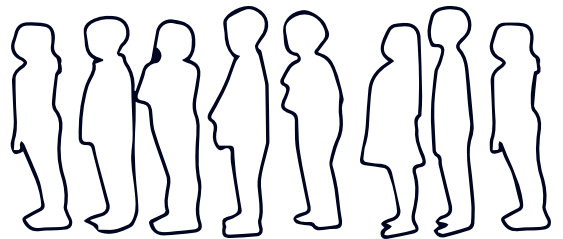
Further information on how to use Tapestry can be found on our website.

The Corridor Code

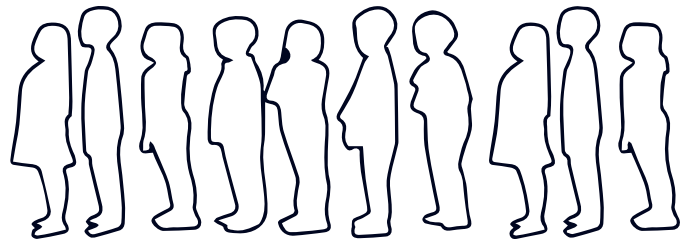
At Penshurst, we have a set of rules called 'The Five Ss'.
These are rules to follow when in community areas such as the corridors.



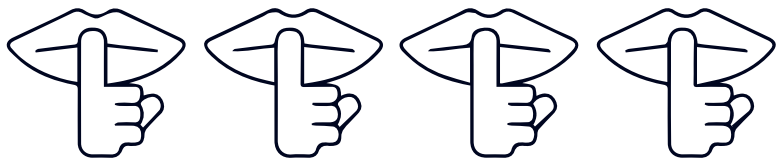
Straight Line



Single File



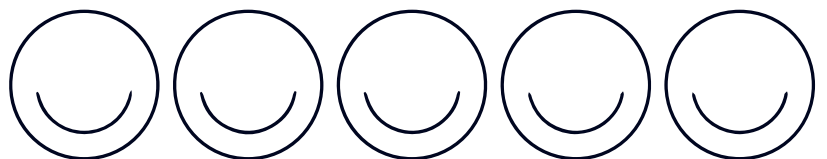
Silence



Sensible



Smile!





School Payments

We use ParentPay online payment system.

This can be used to pay and view lunch meals, as well as other payments, such as trips and production tickets.

ParentPay is a safe and secure system, that enables strong communication between the school and parents concerning payments. It allows you the freedom to make payments to the school whenever and wherever you like.

Cash is not accepted within school, but payments for school services can be made with cash at PayPoint outlets using a PayPoint Card or Barcode letter. The PayPoint outlet will scan the card/barcode we provide you with and take payment by cash from you.



ParentPay is a safe and secure system, that enables strong communication between the school and parents concerning payments.”

Catering

Our school meals service is provided by ABM Caterers, leading independent experts in the Contract Catering Industry.

ABM ensures that all pupils are provided with:

- A high-quality meal provision
- A range of choice for all pupils each day
- An opportunity for pupils to be involved in special 'theme days'
- Opportunities for pupils to experience different cultural foods
- Easy transactions for school meals to be retained for parents

The children use an electronic system to order their lunch in the morning which is monitored and supervised by their class teacher.

Please note that if your child is in the nursery phase and staying all day at nursery, they will require a packed lunch.

Free School Meals:

All children in Reception to Year 2 are eligible for a universal free school meal, but the application process (if eligible) should still be completed.

If you require more information regarding the free school meals process, please contact us on 01482 648604



Well-being and Support

We are committed to the well-being of every child.

Children are encouraged to explore their emotional well-being throughout the day and relay their feelings through an 'Emotional Barometer'. Check-in and check-out circles are deployed in every classroom to allow children to reflect upon their well-being and allow an opening to express their feelings further.

Our staff closely monitor the progress of every pupil and offer support where required to ensure that every child meets our aspirational expectations, with the confidence and skills to be effective learners and effective members of the community.

High quality teaching, exceptional facilities and a wide range of activities combine to offer every child the opportunity to find something they enjoy and can excel at, ensuring everyone has their moment to shine.

However, if your child's progress gives any cause for concern, staff will discuss this with you and agree how to support the child. This may also include a discussion with our SENDCo in order to access additional educational support.



Our staff closely monitor the progress of every pupil and offer support where required to ensure that every child meets our aspirational expectations, with the confidence and skills to be effective learners and effective members of the community.”



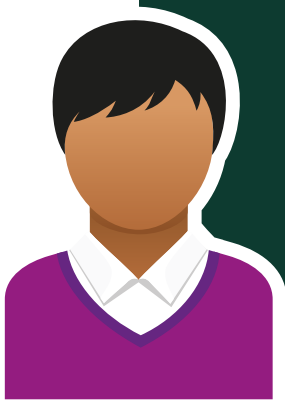
Parental Feedback

We are so proud of our childrens' achievements and often receive thanks and that makes us even more proud of our staff too. We really appreciate pupils, parents and carers spending their time writing to us with feedback and we have shared some with you below...



"I just wanted to send you a quick email to make you aware of the outstanding support I have received from 2 members of your staff over the past week. XXXX has been suffering with XXXX, so my anxiety has been suffering. I emailed school with my concerns, and we are overwhelmed with the swift response of support, guidance, referrals and reassurance we received in such a short time. This even included a face-to-face meeting yesterday after school. I slept properly for the first time last night in weeks due to the very kind, reassuring and supportive words regarding XXXX at school. I walked into the meeting feeling like a failure as a mum and walked out feeling proud of not only my parenting, but of the school choice I had made for both my children. I just wanted you to know that not all superheroes wear capes! Both members of staff went above and beyond, and we are truly grateful."

- Parent of a pupil



I just wanted to email to say how impressed I was with the school sports day today. I feel that the older pupils who were helping with the event need some special recognition, they are a credit to themselves and the school. It was so lovely to see the care they took with their younger peers and the enthusiasm with which they supported them. What fantastic role models for our young children to look up to as they progress through the school. Well done all involved!" - *Parent of a pupil*

Frequently Asked Questions

My child is sick, how do I report an absence?

If your child is sick, please contact the school on **01482 648604 option 1** before 9:00am on the first day of absence to report the absence. Contact should be made on every other day of illness. Further details and support on specific illness relevant to school attendance can be gained by speaking with Mrs Kibart, the Attendance Manager or by emailing attendance@hessleacademy.com

At what age is school attendance compulsory?

Children are required to be in school full-time from the age of five. Attendance at Nursery is optional.

Can my child cycle to school?

Yes, your child can cycle if they are accompanied by an adult. If you wish your child to cycle on their own, we will need a permission letter from you with parental responsibility.

What should I put in my child's packed lunch?

We encourage healthy eating and expect parents to choose healthily when creating a packed lunch?

An example of a healthy packed lunch:

- A sandwich
- No crisps except baked snacks e.g., baked crisps, cheddars
- A wafer biscuit, yoghurt, and a piece of fruit
- Bottle of water or juice
- No sweets, fizzy drinks, nuts or chocolate (unless covering a wafer/biscuit)

What do I do if my child has lost a piece of clothing?

We advise that you sew your child's name into all clothing or write their name in indelible ink. If an item goes missing, your child must inform the class teacher and look in lost property.

Is there a before and after school provision?

There are an extensive number of after school activities which are arranged to run throughout term time. There is also a term time Breakfast Club. Details of our current activities can be found on our website.



There are an extensive number of after school activities which are arranged to run throughout term time. There is also a term time Breakfast Club."



Term Dates 2023-24

Autumn Term

School re-opens for students:
Tuesday 5 September 2023

School closes:
Thursday 26 October 2023

School re-opens for students:
Monday 6 November 2023

School closes:
Thursday 21 December 2023

Spring Term

School re-opens for students:
Tuesday 9 January 2024

School closes:
Friday 9 February 2024

School re-opens for students:
Monday 19 February 2024

School closes:
Friday 22 March 2024

Summer Term

School re-opens for students:
Monday 8 April 2024

May Day Bank Holiday:
Monday 6 May 2024

School closes:
Friday 24 May 2024

School re-opens for students:
Monday 3 June 2024

School closes:
Friday 19 July 2024

Keep up to date with school life...



Keep up to date with school life
and activities by regularly
visiting our website and Twitter.



@PenshurstSchool

www.thehesseleacademy.co.uk




**THE
HESSLE
ACADEMY**



THE CONSORTIUM
ACADEMY TRUST

Penshurst Primary School
Winthorpe Road
First Lane
Hessle
East Riding of Yorkshire
HU13 9EX

Tel: (01482) 648604
office@hessleacademy.com

 @PenshurstSchool